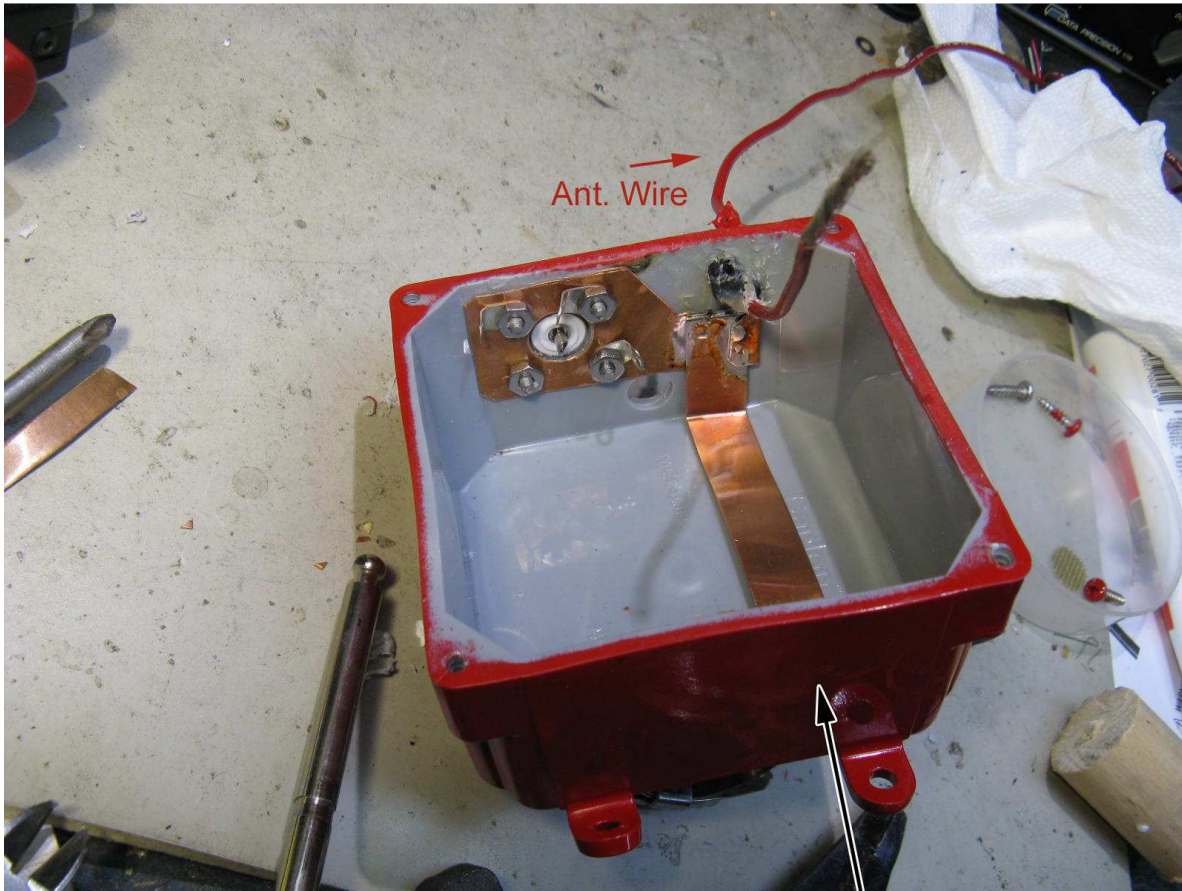
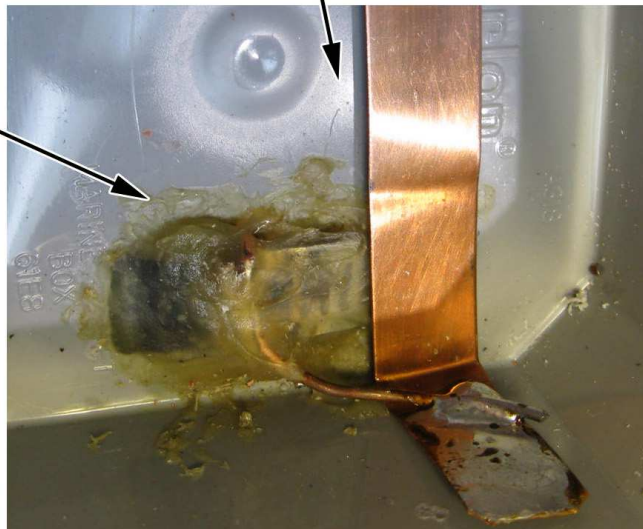


3 - 30 MHz UNUN - 50 ohms to 450 ohms, unbalanced/ unbalanced  
Use to end feed 68' (or 135') wire using tower mount (or other GND)  
High "Z" feed can minimize grounding requirements.





Slots cut for hose stainless clamp.  
Wire silver soldered to clamp.  
Covered with "plastic" epoxy.

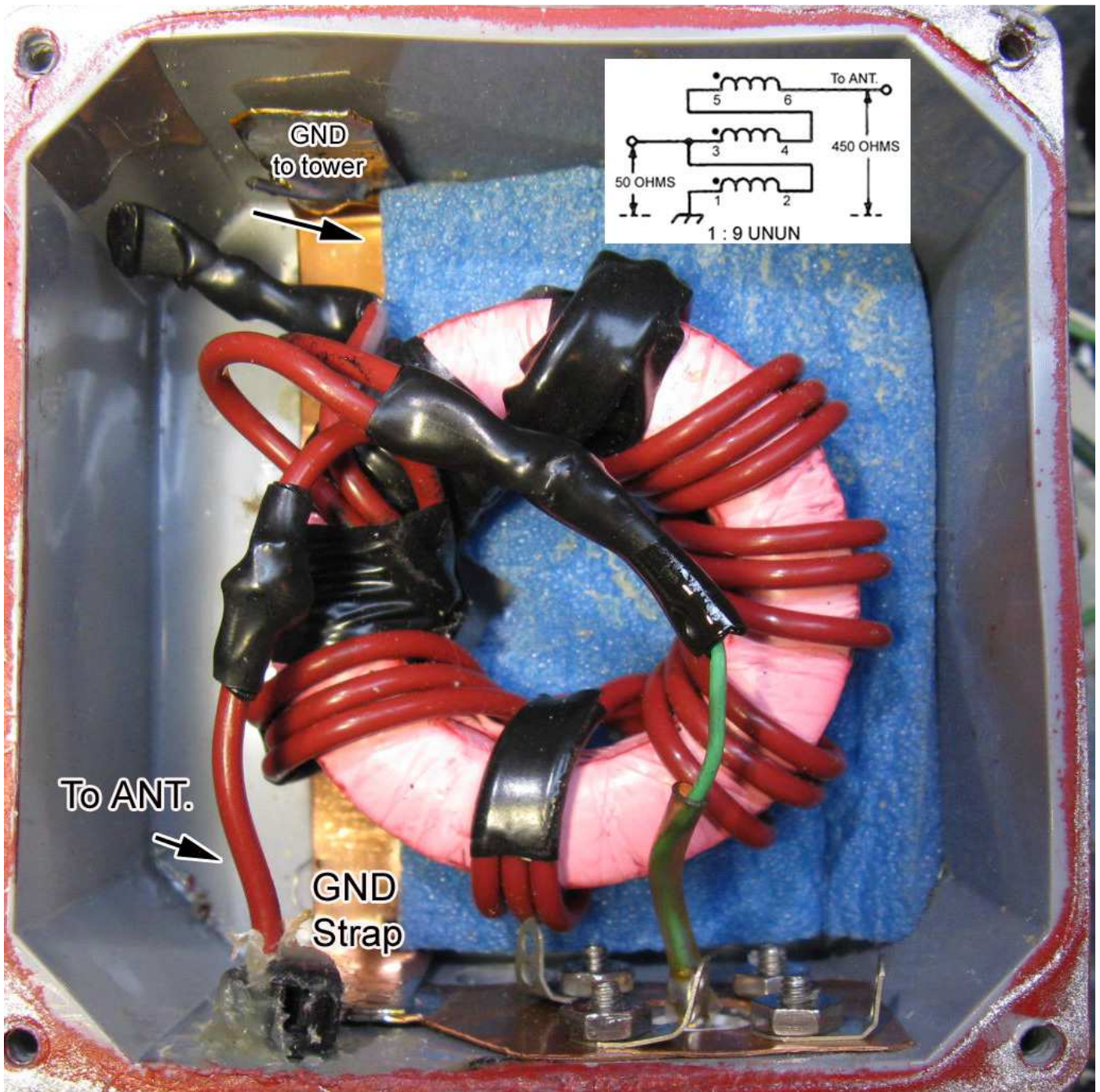


Inside view before torroid.

MK\_2 9:1 UNUN

Connections: Tower > stainless hose clamp > copper ground strap > SO239

4" Outdoor electrical box & cover (w/ o-ring) used.



With 240-61 torroid installed. Six turns of #14 Teflon insulated wire, trifilar wound.

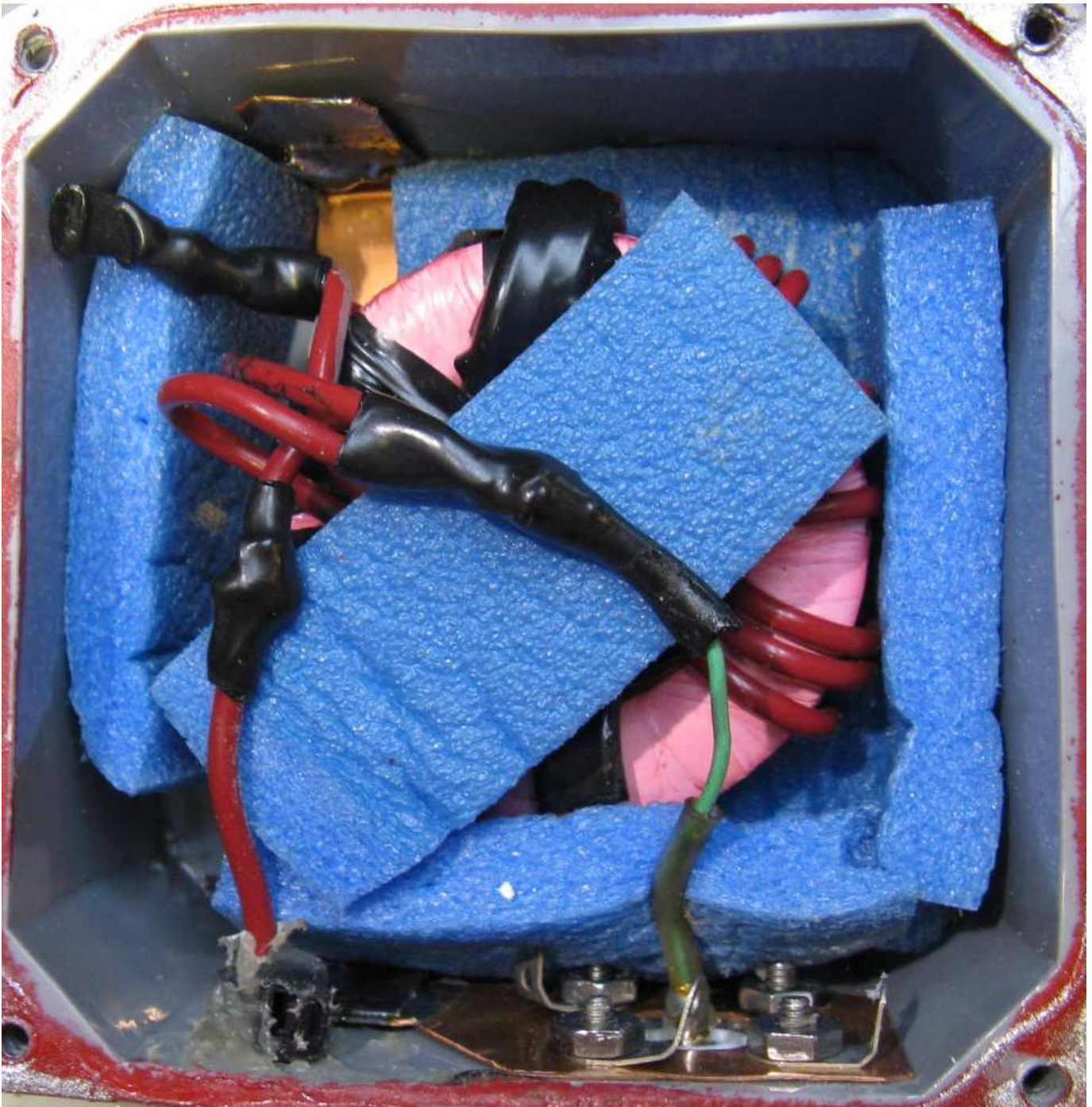
Wire not critical but heavy AWG and good insulation is best.

I used #14 Teflon insulated. Teflon wrapped core\*.

**Have run in excess of 400 watts with no issues.**

Don't know the upper power limit... \*Pipe thread sealant

With PE foam spacers installed.



PE foam holds everything centered in place and provides additional insulation.